

Clearmac® Solution for Tree Pits



Environment and pedestrian-friendly paving

Clearmac®, the premier resin bound paving for pedestrian areas and lightly trafficked roadways, is also the ideal solution for surfacing tree pits in metropolitan and public spaces. The fully resin-encapsulated aggregate matrix creates a highly durable yet porous surface, which enables water to flow through to the tree roots while maintaining a safe and tidy pedestrian environment.

Using **Clearmac®** paving around tree pits provides an attractive, easy-to-maintain surface with no loose stone, avoiding the trip-hazards and build up of litter associated with traditional metal grilles / shingle and facilitating easy cleaning by mechanical sweepers. The open texture of the paving also allows trees to grow, with the aggregate peeling back as the trunk expands.

A wide range of aggregates is available for **Clearmac®** tree pits (see overleaf) including natural and pea gravel and rounded buff; coloured marble including white, black, green and pink; and specialist grades containing recycled glass. Typically stone sizes of 3-10 mm are used to ensure a highly porous structure allowing water to freely permeate through to the tree roots.

Typical Construction

Surface course: **Clearmac®** tree pit paving to 40mm depth

Base: 100mm depth of 40mm free draining crushed stone well compacted in 2 layers

Sub-base: Suitable depth of well compacted tree soil or similar covered with a water permeable membrane to prevent upward movement of fine soil and tree roots.

Performance

Clearmac® paving is based upon BS4987 British Standard for coated macadams, with the bitumen replaced by a specially formulated clear binder. The tree pit system uses specifically selected

aggregates to allow water to flow through to the roots while maintaining a highly durable surface.

The cured paving has a textured finish resistant to degradation caused by weathering and UV radiation, oil, fuel and some commonly used solvents. Under normal usage **Clearmac®** paving is expected to have a lifespan at least equivalent to conventional paving materials.

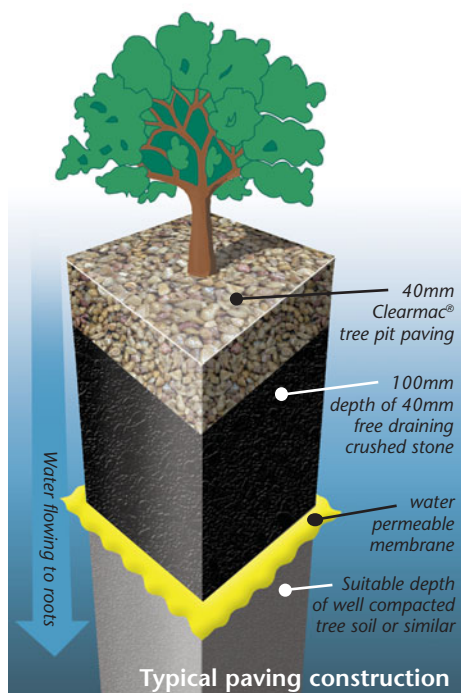
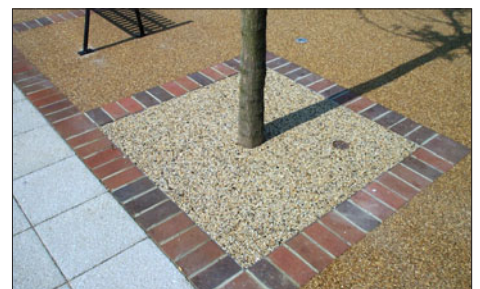
Application

Clearmac® tree pit paving can be used for both new and existing trees. All construction is undertaken by hand rather than mechanical means to avoid damaging the tree roots. The **Clearmac®** paving wearing course is mixed on site and hand-floated to a smooth finish.

Installation is carried out throughout the UK and Eire by a network of licensed contractors with fully trained operatives.

Quality Assurance

Clearmac® resin bound paving is supplied and laid within an ISO 9001 quality management system certified by LRQA.



Standard colours



T500 3-5mm Gravel



T612 6-10mm Gravel



T629 6-10mm Light Gravel



T611 6-10mm Rounded Buff



T616 Black Marble



T624 Green Marble



T625 Light Pink Marble



T626 Pea Gravel



T627 Pink Marble



T628 White Marble

Other Ayton Products

Clearmac®

Proprietary clear resin bound paving using natural aggregates fully encapsulated in a 15-20mm depth wearing course. Provides a visually stunning and highly durable paving solution either by itself or in combination with traditional block paving, Yorkstone, mosaics and granite setts. Available for supply and lay only via Ayton Products licensed contractors.

Stonebond®

Polyurethane surface dressing using resin-bonded aggregates to create texture, hard wearing and attractive surfaces.

Colourchip®

Hot clear resin-coated chippings providing effective colour demarcation on conventional hot rolled asphalt.

Tripave®

Base upon rapid cure methyl methacrylate (MMA) technology, a water impermeable, highly durable, fully bound surfacing with variable texture and colour finishes.

Ayton Playsafe®

Coloured EPDM / recycled rubber resin bound, impact absorbing, safety surfacing for applications including playgrounds, play areas and stables.

Ayton Products also produce a full range of **Bitumen & Construction Products** and **Aggregates & Asphalts**. Full details available on request.

Other colours supplied subject to aggregate availability.